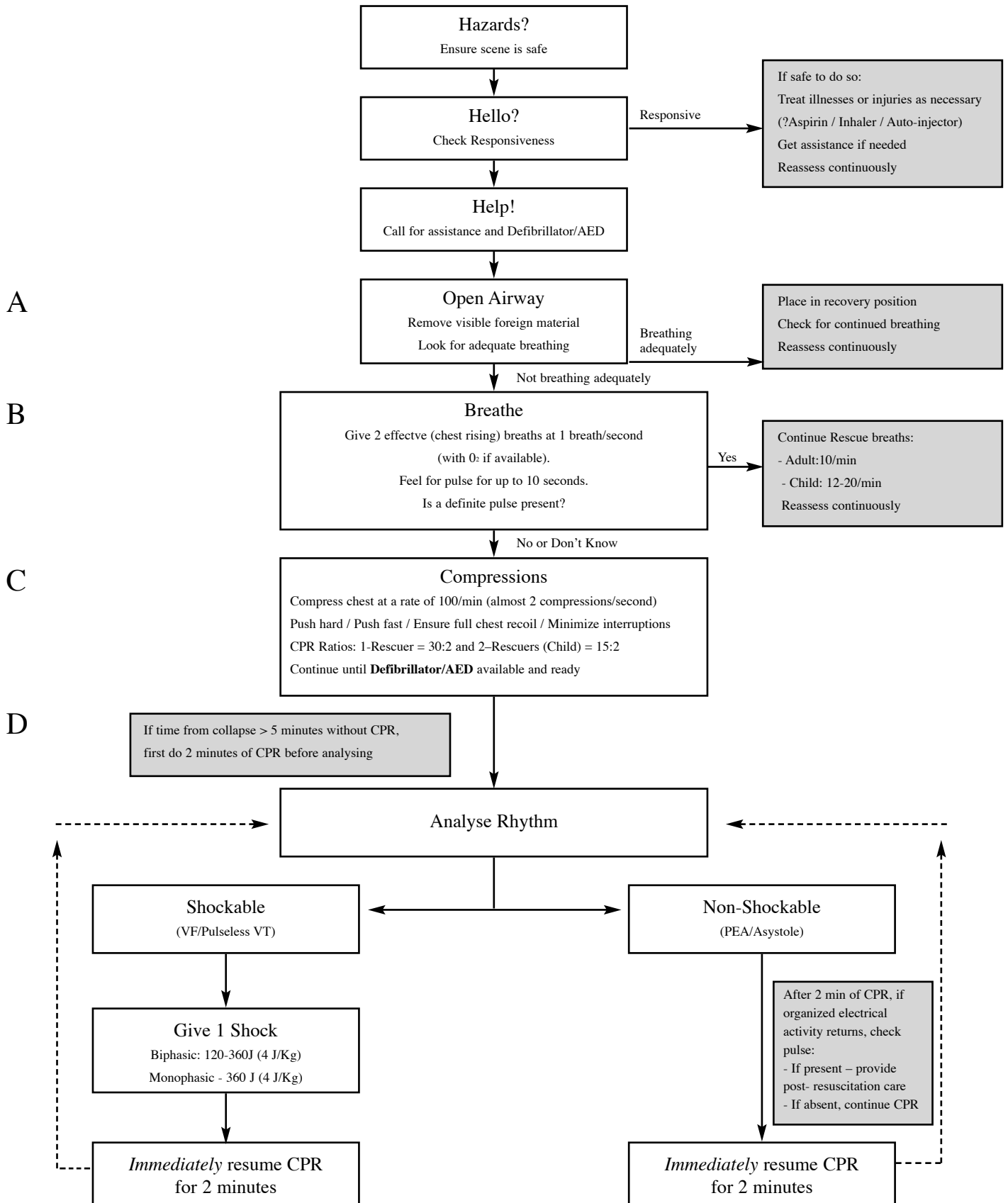


Basic Life Support for Healthcare Providers

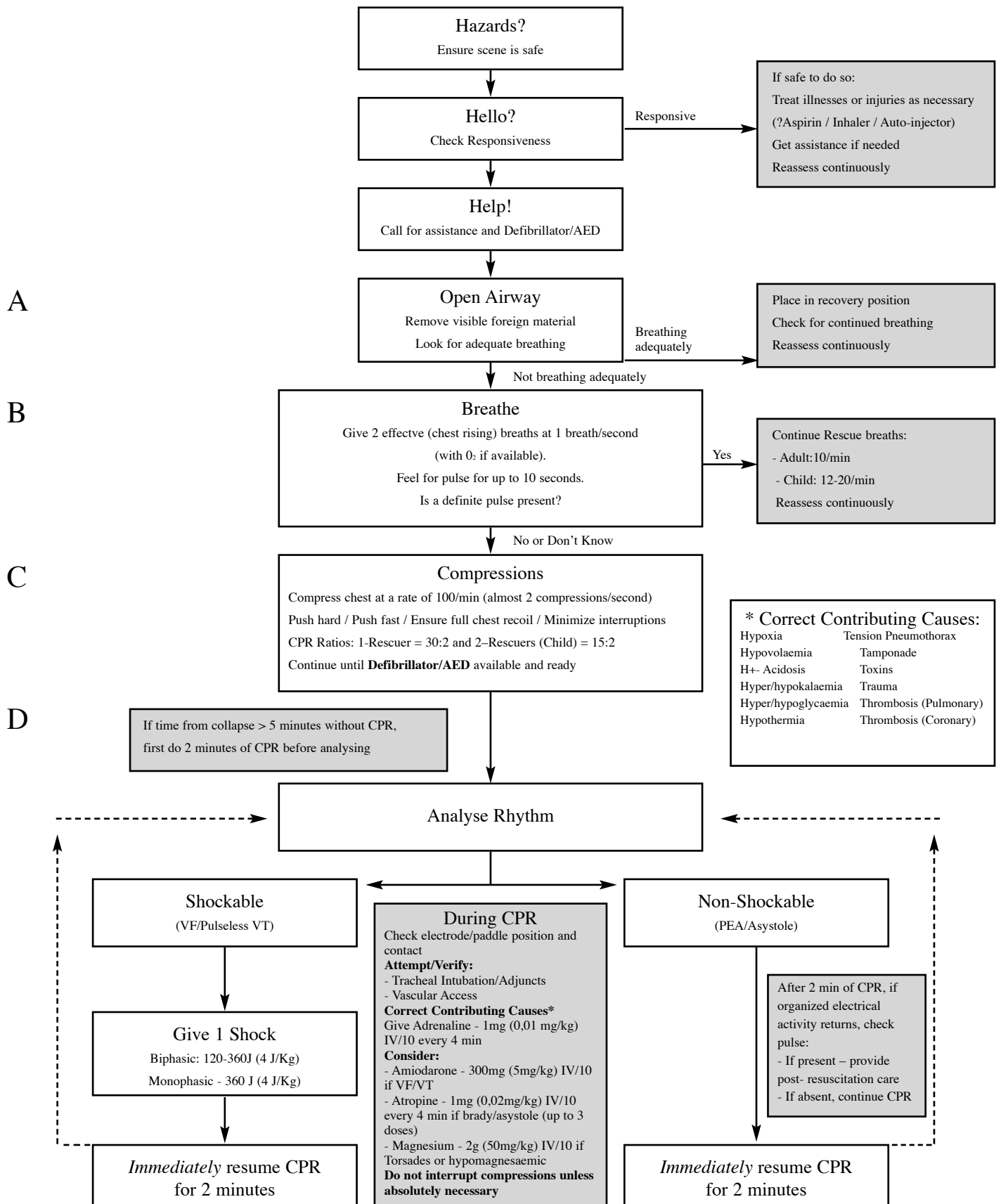
(Adult and Child)



Do not interrupt chest compressions unless absolutely necessary

Advanced Life Support for Healthcare Providers

(Adult and Child)



Recommended Defibrillator Energy Settings in Cardiac Arrest

(Adult and Child)

Paediatric Patients (Pre-Puberty)

Monophasic & Biphasic Defibrillators - 4 Joules/kg (1st and subsequent shocks)

Adult Patients (Post-Puberty)

Monophasic Defibrillators - 360 Joules (1st and subsequent shocks)

Biphasic Defibrillators - As per Manufacturer's recommendations (See Table)

Defibrillator Make	Distributor in SA	Biphasic Waveform	Recommended Energy Setting in Cardiac Arrest (Joules)			
			1st Shock	2nd Shock	Subsequent Shock	Paed
H P / Heartstart	Philips	BTE	150 J	150 J	150 J	4 J/kg
Laerdal/Heartstart	Survival	BTE	150 J	150 J	150 J	4 J/kg
Life-Pak	Medtronic	BTE	200 J	300 J	360 J	4 J/kg
MRL	Welch Allyn	BTE	150 J	200 J	300 J	4 J/kg
Nihon Kohden	SSEM	BTE	150 J	200 J	270 J	4 J/kg
Powerheart AED	SSEM	BTE(VE)	200 J	300 J	360 J	4 J/kg
Responder	Medhold	BTE(VE)	200 J	300 J	360 J	4 J/kg
Zoll	Stat Medical	Rectilinear	120 J	150 J	200 J	4 J/kg

(BTE = Biphasic Truncated Exponential) (VE = Variable Escalating)

Labeling of all Defibrillators

- Labels containing Recommended Energy Settings for Manual Defibrillators are available from the Defibrillator Distributors, and should be placed on each machine (Monophasic and Biphasic). Please contact the appropriate Distributor as soon as possible to ensure that every defibrillator that you may have access to is correctly labeled.
- AED's that have been modified to comply with the latest international guidelines will be labeled "2006 Protocol Compliant". AED users are advised to follow the AED voice prompts, and to contact their AED Distributor to upgrade their device as a matter of urgency.

DEFIBRILLATOR	DISTRIBUTOR	TELEPHONE	FAX	CONTACT PERSON
Hewlett Packard / Heartstart AED	Philips Medical	011 471 5000	011 471 5384	Renier Hattingh
Laerdal / Heartstart AED	Survival Technology	011 792 2190	011 793 4234	Janine O'Donnell
Physio-Control / Life-Pak	Medtronic Africa	011 677 4809	011 616 1104	Tony Soares
MRL	Welch Allyn	011 777 7555	011 777 7556	Lezanne de Koning
Nihon Kohden / Powerheart AED	Specialised Systems Electro Medical	011 444 8184	011 444 8171	Lizelle Grindell
Responder	Medhold GEMS	011 975 0633	011 975 3870	Terence Dobie
Zoll	Stat Medical	011 462 3112	011 462 3113	Tom Watson